

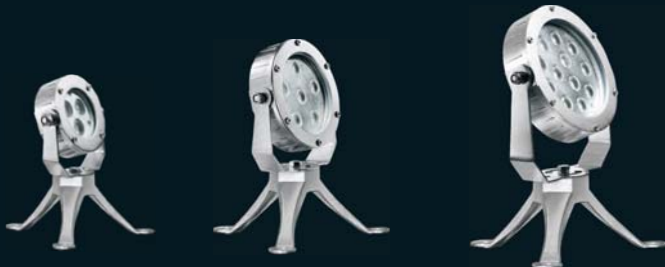
High power LED underwater spot light

RoHS CE P68

Completely stainless steel housing & accessory SUS 316*



RGB 4C type

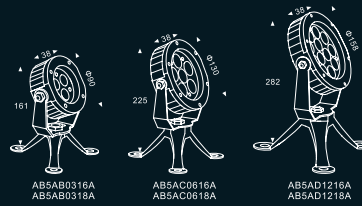


AB5AB0316A
AB5AB0318A
1.5kg

AB5AC0616A
AB5AC0618A
2.13kg

AB5AD1216A
AB5AD1218A
3.1kg

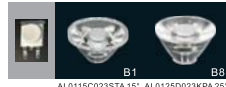
Back view



Warning:
Must be installed underwater to prevent the light from burning up because of over-heating.

Specifications

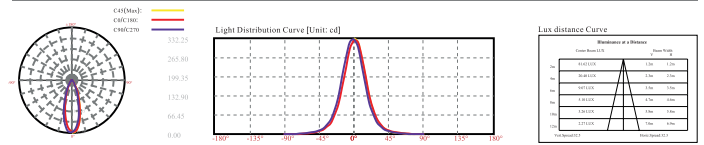
Housing	Molding shaped sus 316* stainless steel housing
Bracket	Stainless steel sus 316*
Front cover	Stainless steel sus 316L*
Glass	Tempered glass, T=5mm
Lens	Optical lens, efficiency ≥ 85%
Cable gland	IP-68 PG-11 copper with nickel-coated
Seal	Molding shaped silicon seal under the front cover Silicon glue among LED, lens and PCB
LED	1Q type power LED
PCB	Excellent heat conductivity aluminum, coefficient of heat Conductivity ≥ 2.0w/mk
Power cable	H07RN-F 2X1.0mm ² L=2m (for Single color) H07RN-F 4X1.0mm ² L=2m (for RGB)
Application environment	Temperature of water between -20℃ ~ 40℃ less than 1 meter depth.



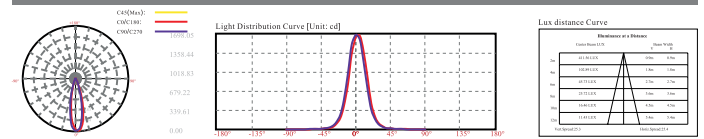
AL0115C0235TA 15° AL0125D023KA 25°

Item No.	Light source	The manufacturer selected lens	Degree (°)	Input voltage (v)	Typical operating current (mA)	Typical consumption (w)	Typical luminance (lm)	IK rate
AB5AB0316A	3×2W	B1	15	24VDC	240	5.8	Cool white=321 Warm white=274	06
AB5AB0318A	3×2W RGB 3in1	B8	25	24VDC	R=70 G=124 B=124	7.7	147	06
AB5AC0616A	6×2W	B1	15	24VDC	470	11.2	Cool white=600 Warm white=520	06
AB5AC0618A	6×2W RGB 3in1	B8	25	24VDC	R=200 G=260 B=260	17.3	300	06
AB5AD1216A	12×2W	B1	15	24VDC	1200	29	Cool white=950 Warm white=807	06
AB5AD1218A	12×2W RGB 3in1	B8	25	24VDC	R=400 G=500 B=500	33.6	600	06

Graphical representation for AB5AB0316A warm white light



Graphical representation for AB5AC0616A warm white light



Graphical representation for AB5AD1216A warm white light

