

LED sided view inground light

RoHS CE P67

Stainless steel front cover



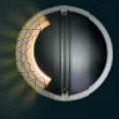
A1E2AES1009A



A2E2AES2009A



A4E2AES2409A



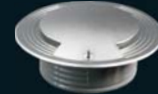
LED sided view inground light

RoHS CE P67

Stainless steel front cover



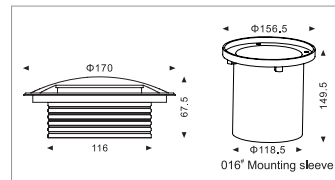
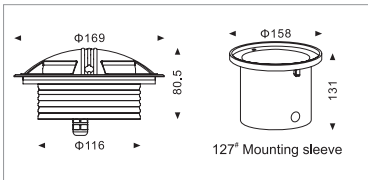
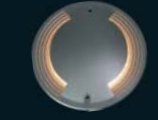
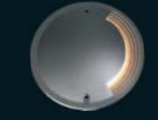
A1E2BES0617A



A2E2BES0617A



A4E2BES0617A



Specifications

Housing & Front cover	Stainless steel SUS 316'
Loading capacity	>2000kg
Cable gland	IP-68 PG-9 pvc
Gasket	Molding shaped silicone seal
Driver	Constant current output
Operating temperature	-20°C ~ 40°C
Power cable	H05RN-F 2X1.0mm ² L=0.5m (low voltage) H05RN-F 3X1.0mm ² L=0.5m (high voltage)
Mounting sleeve	Die-cast grey powder coater

Item No.	Light source	Input voltage (v)	Typical operating current (mA)	Typical consumption (w)
A1E2AES1009A	10×Ø5 LED	24VDC	24V=34	24V=0.8
		120/240	120V=25	120V=1.2
			240V=17	240V=1.4
A2E2AES2009A	20×Ø5 LED	24VDC	24V=68	24V=1.6
		120/240	120V=35	120V=2.3
			240V=27	240V=2.9
A4E2AES2409A	24×Ø5 LED	24VDC	24V=71	24V=1.7
		120/240	120V=36	120V=2.4
			240V=28	240V=3

Specifications

Housing	12' Die-casting grey powder coated aluminum . T=60-80µm. Adhesion of ISO class 1/ASTM class 4B
Front cover	Stainless steel SUS 316'
Loading capacity	>2000kg
Cable gland	IP-68 PG-9 pvc
Gasket	Molding shaped silicone seal
Driver	Constant current output
Operating temperature	-20°C ~ 40°C
Power cable	H05RN-F 2X1.0mm ² L=0.5m (low voltage) H05RN-F 3X1.0mm ² L=0.5m (high voltage)
Mounting sleeve	016' pvc

Item No.	Light source	Input voltage (v)	Typical operating current (mA)	Typical consumption (w)
A1E2BES0617A	SMD5630 LED 6×0.5W	24VDC	24V=126	24V=3
		120/240	120V=55	120V=3.8
			240V=33	240V=3.8
A2E2BES0617A	SMD5630 LED 6×0.5W	24VDC	24V=126	24V=3
		120/240	120V=55	120V=3.8
			240V=33	240V=3.8
A4E2BES0617A	SMD5630 LED 6×0.5W	24VDC	24V=126	24V=3
		120/240	120V=55	120V=3.8
			240V=33	240V=3.8