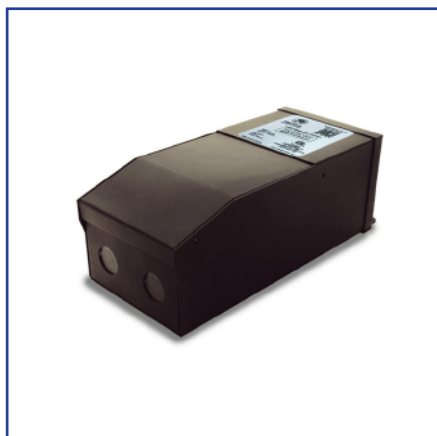


INDOOR & OUTDOOR SERIES

T-Series



Description: Our T series is a multi-output, class 2, dimmable LED driver. It is equipped with push-to-reset breakers, one on each output, protecting both the load and the driver. Encased in a high-quality NEMA 3R metal case enclosure, that includes 2 knock-outs to enable easy installation. All of our T-Series LED Drivers are dimmable with any standard MLV TRIAC dimmer.

WATTAGE

Output Volts

Input Volts

Max Output Current

Efficiency

Dimmable

Input Current

Form Factor

192w

24V

110V

4 A on each port

84.3%

YES-Magnetic

2.2A

9.8"x3.2"x4.2"

288w

24V

110V

4 A on each port

84%

YES-Magnetic

3.4 A

9.8"x3.2"x4.2"

ORDERING INFORMATION

SERIES	WATTAGE	VOLTAGE
T	192 288	24 (VDC)

T-T: ___ L24DC

Features and Benefits

- Dimmable with any standard MLV TRIAC (Leading edge) dimmer switch
- Dual protection – primary and secondary circuit breakers
- NEMA 3R Enclosure
- Indoor/Outdoor
- Two knock-outs one on each side
- Class 2
- ETL Listed
- Certified to CSA Standard

